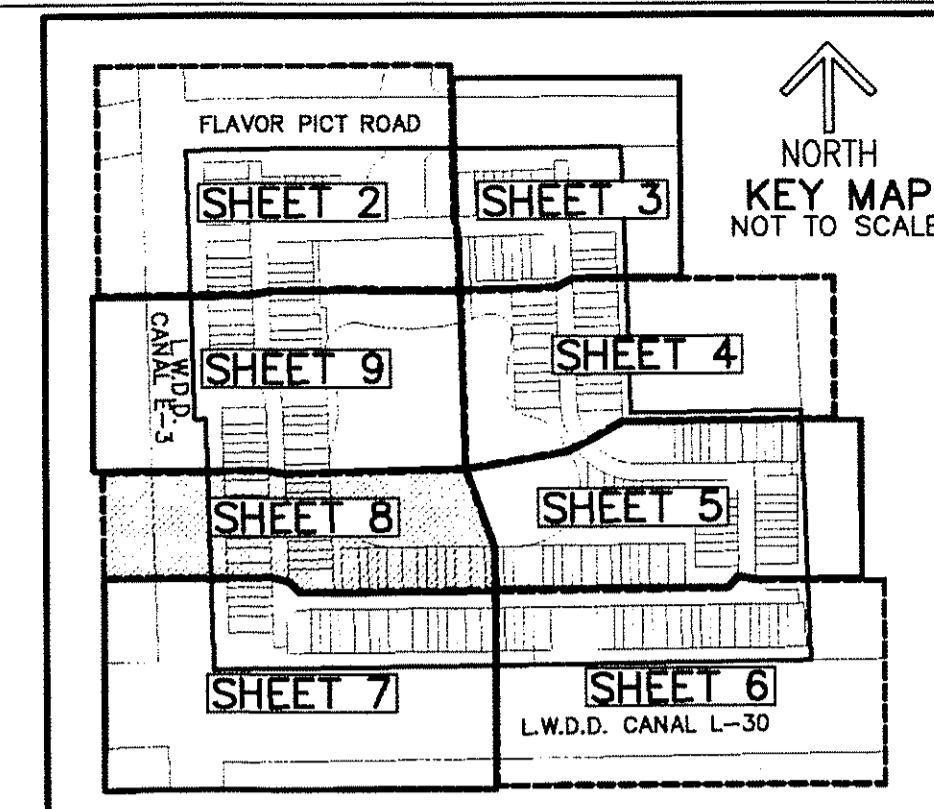


0609000

# FLAVOR PICT TOWNHOMES PUD

BEING A PORTION OF THE SOUTHEAST ONE-QUARTER OF SECTION 2,  
TOWNSHIP 46 SOUTH, RANGE 42 EAST,  
PALM BEACH COUNTY, FLORIDA.

THIS INSTRUMENT PREPARED BY  
DAVID P. LINDLEY  
OF  
**CAULFIELD and WHEELER, INC.**  
SURVEYORS - ENGINEERS - PLANNERS  
7900 GLADES ROAD, SUITE 100  
BOCA RATON, FLORIDA 33434 - (561)392-1991  
CERTIFICATE OF AUTHORIZATION NO. LB 3591



200

STATE OF FLORIDA  
COUNTY OF PALM BEACH  
THIS PLAT WAS FILED FOR  
RECORD AT \_\_\_\_\_ M.  
THIS \_\_\_\_\_ DAY OF \_\_\_\_\_  
A.D. 20\_\_\_\_ AND DULY RECORDED  
IN PLAT BOOK \_\_\_\_\_ ON  
PAGES \_\_\_\_\_ AND \_\_\_\_\_

SHARON R. BOCK  
CLERK AND COMPTROLLER

BY: \_\_\_\_\_  
DEPUTY CLERK

**SHEET 8 OF 9**

- LEGEND/ABBREVIATIONS**
- CL - CENTERLINE
  - Δ - DELTA (CENTRAL ANGLE)
  - BDE - BUFFER DRAINAGE EASEMENT
  - CB - CHORD BEARING
  - CD - CHORD DISTANCE
  - DE - DRAINAGE EASEMENT
  - E - EASTING
  - FPL - FLORIDA POWER & LIGHT CO.
  - L - ARC LENGTH
  - LAE - LIMITED ACCESS EASEMENT
  - LB - LICENSED BUSINESS
  - LMAE - LAKE MAINTENANCE ACCESS EASEMENT
  - LME - LAKE MAINTENANCE EASEMENT
  - LSE - LIFT STATION EASEMENT
  - L.W.D. - LAKE WORTH DRAINAGE DISTRICT
  - N - NORTHING
  - O.R.B. - OFFICIAL RECORD BOOK
  - BBUE - CITY OF BOYNTON BEACH UTILITY EASEMENT
  - R - RADIUS
  - UE - UTILITY EASEMENT
  - PRM - DENOTES PERMANENT REFERENCE MONUMENT  
4" x 4" x 24" CONCRETE MONUMENT WITH  
ALUMINUM DISK STAMPED "C&W PRM LB3591"
  - PCP - DENOTES PERMANENT CONTROL POINT

**NOTES**  
**COORDINATES, BEARINGS AND DISTANCES**

COORDINATES SHOWN ARE GRID  
DATUM = NAD 83 1990 ADJUSTMENT  
ZONE = FLORIDA EAST  
LINEAR UNIT = US SURVEY FEET  
COORDINATE SYSTEM 1983 STATE PLANE  
TRANSVERSE MERCATOR PROJECTION  
ALL DISTANCES ARE GROUND  
SCALE FACTOR = 1.0000339  
GROUND DISTANCE X SCALE FACTOR = GRID DISTANCE  
BEARINGS AS SHOWN HEREON ARE GRID DATUM,  
NAD 83 1990 ADJUSTMENT, FLORIDA EAST ZONE.

